



---

# NORTHERN KENTUCKY SOLID WASTE RESOURCE GUIDE

---

*A Publication of the Northern Kentucky Solid Waste Management Area*

**Boone • Campbell • Kenton**

## Northern Kentucky Solid Waste Management Area

Boone, Campbell, and Kenton Counties each have a Solid Waste Coordinator who oversees their County's solid waste programming, including recycling, litter abatement, household hazardous waste, and composting. The Solid Waste Coordinator (SWC) enforces their County's solid waste ordinances and handles issues regarding landfill, disposal, and illegal dumping. Additionally, the SWC provides community education and any available solid waste resources.

Boone, Campbell, and Kenton Counties together comprise of the Northern Kentucky Solid Waste Management Area (NKSWMMA). Please contact your local SWC for information on programs, special events, policies, and any additional questions on solid waste.

---

The Northern Kentucky Solid Waste Management Area is funded by the Fiscal Courts of Boone, Campbell, and Kenton Counties. The NKSWMMA is governed by the Judge Executives and one Commissioner of each county, as well as the Technical Advisory Committee. More information can be found online at [www.boonecountyky.org/nkswmma](http://www.boonecountyky.org/nkswmma).

**Boone County**  
*Judge Executive*  
Gary Moore

**Campbell County**  
*Judge Executive*  
Steve Pendery

**Kenton County**  
*Judge Executive*  
Kris Knochelmann

# TABLE OF CONTENTS

<b>Page 4</b>	<b>Important Contact Numbers</b>	<b>Page 11</b>	<b>Household Hazardous Waste (Cont.)</b> CFL Bulbs & Fluorescent Tubes Cylinders & Tanks Gasoline Household Cleaners
<b>Page 5</b>	<b>Waste Haulers, Landfills, &amp; Transfer Stations</b> Waste Haulers Landfills & Transfer Stations Report an Illegal Dump	<b>Page 12</b>	<b>Household Hazardous Waste (Cont.)</b> Latex & Oil Paint Pesticides & Fertilizers Prescription Drugs
<b>Page 6</b>	<b>County Recycling</b> Accepted Items Prohibited Items	<b>Page 13</b>	<b>Household Hazardous Waste (Cont.)</b> Needles Additional Hazardous Waste Household Hazardous Waste Collection Event
<b>Page 7</b>	<b>County Recycling (Cont.)</b> Getting Money for Your Recyclables <b>Appliance Recycling</b> <b>Electronics Recycling</b> Cell Phones	<b>Page 14</b>	<b>Construction &amp; Yard Waste</b> <b>Paper Shredding</b> <b>Packaging Materials</b> Plastic Bags
<b>Page 8</b>	<b>Electronics Recycling (Cont.)</b> Ink/Toner Cartridges General Electronics <b>“Hard-to-Recycle Items”</b>	<b>Page 15</b>	<b>Donating Unwanted Items</b>
<b>Page 9</b>	<b>Tire Disposal</b> <b>Vehicle Disposal</b> <b>Used Oil &amp; Oil Filters</b>	<b>Page 16</b>	<b>Food Donations &amp; Food Waste</b> Food Donations Food Waste
<b>Page 10</b>	<b>Household Hazardous Waste</b> Aerosols Antifreeze Auto & Rechargeable Batteries Single-Use & Rechargeable Batteries	<b>Page 17</b>	<b>Litter Cleanups</b> <b>Education</b>

# IMPORTANT CONTACT NUMBERS

## County Solid Waste Management



**BOONE COUNTY**  
KENTUCKY

**Boone County  
Solid Waste Coordinator\***

**Rebecca Wuerger**  
Solid Waste Services Supervisor  
859-334-3629  
[wbuerger@boonecountky.org](mailto:wbuerger@boonecountky.org)  
5645 Idlewild Road, Burlington

[www.boonecountky.org](http://www.boonecountky.org)



**Campbell County  
Solid Waste Coordinator**

**Megan Clere**  
Solid Waste Coordinator  
859-547-1866  
[mclere@campbellcountky.gov](mailto:mclere@campbellcountky.gov)  
1098 Monmouth Street, Newport

[www.campbellcountky.gov](http://www.campbellcountky.gov)



**Kenton County  
Solid Waste Coordinator**

**Melissa Grandstaff**  
Solid Waste Management Coordinator  
859-392-1919  
[melissa.grandstaff@kentoncounty.org](mailto:melissa.grandstaff@kentoncounty.org)  
420 Independence Station Road,  
Independence

[www.kentoncounty.org](http://www.kentoncounty.org)

*\*Serves as the NKSWMA Coordinator*

### Conservation Districts

Boone County: 859-586-7903  
Campbell County: 859-635-9587  
Kenton County: 859-356-1019

### Emergency Management (Hazard Mitigation)

Boone County: 859-334-2279  
Campbell County: 859-635-1111  
Kenton County: 859-392-1488

### Kentucky Energy and Environmental Cabinet

*Florence Regional Office*  
8020 Veterans Memorial Drive, Suite #110,  
Florence  
859-525-4923

### Northern Kentucky Water District

2835 Crescent Springs Road, Erlanger  
859-578-9898

### Boone County Water District

2475 Burlington Pike, Burlington  
859-586-6155

### Public Works/Road Department

Boone County: 859-334-3600  
Campbell County: 859-635-9100  
Kenton County: 859-392-1920

### Sanitation District No. 1 (SD1)

1045 Eaton Drive, Ft. Wright  
859-578-7450  
Opt. 1 for emergencies

### UK Cooperative Extension Services

Boone County: 859-586-6101  
Campbell County: 859-572-2600  
Kenton County: 859-356-3155

# WASTE HAULERS, LANDFILLS, & TRANSFER STATIONS

**FIRST:** If you live in a subdivision or planned neighborhood, find out if there is a Homeowners Association (HOA) for your community. Often, the HOA contracts a specific waste disposal hauler for their neighborhood(s).

**SECOND:** If you do not have an HOA and live in a city, contact your city. Cities usually manage waste disposal for incorporated areas. This may not be the case for unincorporated city areas.

**THIRD:** If you live in an unincorporated area and *not in a city*, you are free to contract any local waste disposal hauler that you prefer. It is a mandatory service. For larger items, you may dispose at a local landfill or transfer station for disposal for a fee. Contact your local SWC for information on landfill vouchers and cleanup events.

---

## Waste Haulers

### **Best Way Disposal**

*Curbside Trash & Recycling  
Dumpster Rental*

1389 Production Drive, Burlington  
859-372-4900

### **Republic Services**

*Curbside Trash & Recycling  
Dumpster Rental*

11563 Mosteller Road, Cincinnati  
1-800-543-1339

### **Rumpke Waste & Recycling**

*Curbside Trash & Recycling  
Dumpster Rental*

3990 Generation Drive, Cincinnati  
1-800-828-8171

## Landfills & Transfer Stations

### **Bavarian Waste Landfill**

12764 McCoys Fork Road, Walton  
859-485-4416

### **Rumpke/Covington Transfer Station**

4399 Boron Avenue, Covington  
1-800-828-8171

### **Rumpke/Colerain Township Landfill**

3800 Struble Road, Cincinnati  
1-800-828-8171

### **Best Way/Boone County Transfer Station**

1505 Resource Drive, Burlington  
859-372-4900

### **Rumpke/Pendleton County Landfill**

1374 Bryan Griffin Road, Butler  
1-800-828-8171

### **Rumpke Recycling Facility**

5535 Vine Street, Cincinnati  
1-800-828-8171

---

## Report an Illegal Dump

If you see a garbage pile or dumped items on someone's property, along right-of-ways, or in a public area, please contact your local SWC or Public Works Department immediately. If you see someone in the act of dumping, call 911. ***Illegal dumping is a criminal offense – speak up!***

# COUNTY RECYCLING

**Big Blue Bins are located throughout Boone and Kenton Counties and Rumpke Recycling bins are located throughout Campbell County for 24/7 recycling.** Visit your County's Solid Waste website (located on Page 4) to see what bin is closest to you.

## Accepted Items

### Big Blue Bins (Boone & Kenton):

PLASTIC BOTTLES & JUGS



GLASS BOTTLES & JARS



METAL CANS



MIXED PAPER



CARDBOARD



### Rumpke Recycling (Campbell):

PAPER



PLASTICS

Bottles, jugs, tubs and cups



METAL CANS & CUPS



GLASS BOTTLES & JARS



CARTONS



*\*Please keep plastic bags, food, yard debris, electronics, furniture, flooring, wood, plastic foam, and hazardous materials out of the bins. They contaminate the recycling bin and can cause safety issues (ex: fires).*

## Prohibited Items

PLASTIC PACKAGING



OTHER PLASTIC ITEMS



YARD DEBRIS



HAZARDOUS WASTE



ORGANICS



ELECTRONICS



*\*Dumping in and around recycling bins is illegal and will be assessed by the County SWC. Prohibited items can either be put into your trash, taken to a landfill/transfer station, or properly disposed of at a hazardous waste facility.*

## Getting Money for Your Recyclables

The following companies offer money for **scrap metal and certain appliances**. Call ahead for pricing information.

### **Bluegrass Recycling**

1575 Distribution Drive, Burlington  
859-283-9560

### **Cohen Recycling**

13229 Dixie Highway, Walton  
859-363-8300  
5038 Beech Street, Cincinnati  
513-731-7222

### **Recycling Express**

7430 Industrial Road, Florence  
859-282-5200  
8505 Dixie Highway, Florence  
859-282-5206

### **Can Dew Recycling**

1510 Russell Street, Covington  
859-261-8264

### **Newport Recycling**

534 W 12<sup>th</sup> Street, Newport  
859-261-9335

### **River Metals Recycling**

1220 Licking Pike, Newport  
859-291-5509



## APPLIANCE RECYCLING

Get rid of your broken-down appliances through Boone, Campbell, or Kenton County Solid Waste. Please remove ALL fluids and food before drop-off. Contact your SWC for more details. If you live within city limits, you may also contact your Public Services Department for additional methods.

### **Boone County Recycling Center**

3275 Maplewood Drive, Burlington  
859-334-3151

Monday – Friday  
8:00am – 3:30pm

### **Campbell County Road Department**

1175 Racetrack Road, Alexandria  
859-635-9100

Monday – Friday  
7:00am – 3:30pm

### **Kenton County Public Works**

420 Independence Station Road,  
Independence  
859-392-1920

Monday – Friday  
8:00am – 3:30pm

*\$25 fee for Freon drop-off*

## ELECTRONICS RECYCLING

### Cell Phones

Many retailers will accept cell phones, including local cellular wireless stores, Best Buy, AltaFiber, Office Depot, Staples, Target, and even the Cincinnati Zoo. Please call each location for details. For battery-only disposal, see Single-Use & Rechargeable Batteries (located on Page 10). *Be sure to wipe your phone by removing the SIM card before recycling.*



## Ink/Toner Cartridges

Most major office supply stores accept these items, including Best Buy, Office Depot, and Staples.

### **Boone County Public Works**

5645 Idlewild Road, Burlington  
859-334-3151

### **Kenton County Public Works**

420 Independence Station Road, Independence  
859-392-1920

### **Cincinnati Recycling & Reuse Hub**

911 Evans Street, Cincinnati  
513-629-9040

[www.cincinnati recycling and reuse hub.com](http://www.cincinnati recycling and reuse hub.com)

### **Close the Loop**

*Business options*  
859-757-1115

[www.close the loop usa.com](http://www.close the loop usa.com)

## General Electronics

Each location accepts different items – be sure to visit their website or contact them directly beforehand.  
*Proper disposal is not always free, please call ahead for pricing information.*

### **Best Buy**

100 Meijer Drive, Florence  
859-525-7118

[www.bestbuy.com](http://www.bestbuy.com)

### **Cincinnati Recycling & Reuse Hub**

911 Evans Street, Cincinnati  
513-629-9040

[www.cincinnati recycling and reuse hub.com](http://www.cincinnati recycling and reuse hub.com)

### **Staples**

Various locations

[www.staples.com](http://www.staples.com)

### **Blair Technology Group**

4314 Boron Drive, Suite D,  
Covington  
1-855-252-4784

[www.blairtech.com](http://www.blairtech.com)

### **Cohen Recycling**

13229 Dixie Highway, Walton  
859-363-8300  
5038 Beech Street, Cincinnati  
513-731-7222

[www.cohenusa.com](http://www.cohenusa.com)

### **Tri State Escrap**

6001 Dry Fork Road, Cleves  
513-240-2521

[www.tristateescrap.com](http://www.tristateescrap.com)

### **Cleanlites Recycling**

7806 Anthony Wayne Avenue,  
Cincinnati  
1-800-778-6645

[www.cleanlites.com](http://www.cleanlites.com)

### **Environmental Enterprises**

4650 Spring Grove Avenue, Cincinnati  
1-800-722-2818

[www.eeienv.com](http://www.eeienv.com)

### **USA Green PC**

61 Jolly Industrial Park Drive,  
Wilder  
859-314-9360

[www.usagreenpc.com](http://www.usagreenpc.com)

*\*\*All electronics can be brought and disposed of for free to the Household Hazardous Waste Collection Event, typically held the first Saturday in November. Visit [www.nkyhww.org](http://www.nkyhww.org) for more details or contact your SWC.*

## “HARD-TO-RECYCLE” ITEMS

Some items like beauty packaging, pens, k-cups, toothbrushes, chip bags, razor blades, animal feed bags, and solo cups are hard to recycle in most local recycling programs.

### **Cincinnati Recycling & Reuse Hub**

911 Evans Street, Cincinnati  
513-629-9040

[www.cincinnati recycling and reuse hub.com](http://www.cincinnati recycling and reuse hub.com)

### **TerraCycle**

[www.terracycle.com](http://www.terracycle.com)

*Mail-in programs and zero waste boxes*



## TIRE DISPOSAL

Landfills and Transfer Stations (located on Page 5) will accept tires for a fee. **Every three years, Kentucky Division of Waste Management will host free Waste Tire Collection Events in the Northern Kentucky area** – contact your local SWC for more details. Additionally, most tire detailers will accept tires for a fee.

### Cincinnati Recycling & Reuse Hub

911 Evans Street, Cincinnati  
513-629-9040

[www.cincinnati-recycling-and-reuse-hub.com](http://www.cincinnati-recycling-and-reuse-hub.com)



## VEHICLE DISPOSAL

### Cohen Recycling

13229 Dixie Highway, Walton  
859-363-8300  
5038 Beech Street, Cincinnati  
513-731-7222

### Goodwill

Various locations  
[www.goodwillcars.com](http://www.goodwillcars.com)

### Union Auto Parts

1354 Frogtown Road, Union  
859-384-3381

### The Salvation Army

Various locations  
[www.salvtruck.org/vehicle/create](http://www.salvtruck.org/vehicle/create)



## USED OIL & OIL FILTERS

Certain auto parts stores will accept used oil – please call the individual stores for more details.

### Boone County Public Works

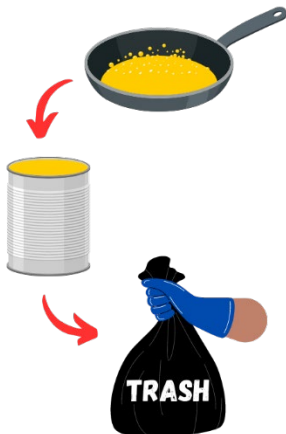
5645 Idlewild Road, Burlington  
859-334-3600

*Accepts used motor oil up to five gallons and oil filters*

### Universal Environmental Services

7550 Empire Drive, Florence  
859-647-9192

*Accepts used motor oil, cooking oil, and oil filters*



**Cooking oils should not be dumped down your drain.** Oil particles clump together and form large clogs over time. You can solidify your used oils and toss them in your regular trash. Visit [www.sd1.org](http://www.sd1.org) for more information on the Fats, Oils, & Grease (FOG) Program.

***\*\*Used oil can be brought and disposed of for free at the Household Hazardous Waste Collection Event, typically held the first Saturday in November. Visit [www.nkyhhw.org](http://www.nkyhhw.org) for more details or contact your local SWC.***

# HOUSEHOLD HAZARDOUS WASTE

Household hazardous waste is the group of materials that are commonly found in homes but actually require special attention when being discarded. *Keep in mind, the best disposal method is to use up the item as it is intended until it is empty.* **Please note that most organizations charge for disposal.**

## Aerosols

Aerosols that are completely empty can be recycled if the top sprayer part is pulled off. If not empty, the contaminants are hazardous and need to be disposed of properly.

### Cleanlites Recycling

7806 Anthony Wayne Avenue,  
Cincinnati  
1-800-778-6645

### Environmental Enterprises

4650 Spring Grove Avenue,  
Cincinnati  
1-800-722-2818

### Midwest Environmental Enterprises

27 Kiesland Court, Hamilton  
513-681-9990

Á

## Antifreeze

### Universal Environmental Services

7550 Empire Drive, Florence  
859-547-9192

### Environmental Enterprises

4650 Spring Grove Avenue,  
Cincinnati  
1-800-722-2818

Á  
Á  
Á  
Á  
Á

## Auto & Rechargeable Batteries

Most stores that sell auto batteries offer disposal. Lead-acid batteries are toxic and should not go to the landfill. See General Electronics (located on Page 8) for additional disposal methods.

### Boone County Recycling Center

3275 Maplewood Drive, Burlington  
859-334-3151

### Kenton County Public Works

420 Independence Station Road, Independence  
859-392-1920

**\*\*If you live within city limits, contact your Public Services Department for additional methods.**

## Single-Use & Rechargeable Batteries

Single-use alkaline batteries (AA, AAA, 9V, D) are generally OK to put in your household trash. For more protection, tape the ends with Scotch tape or place in a plastic bag. **Lithium-ion batteries (typically in electronics, including e-cigarettes) should never go in your household trash and should be properly disposed,** as they will explode and cause fires. See General Electronics (located on Page 8) for additional disposal methods.

### Cincinnati Recycling & Reuse Hub

911 Evans Street, Cincinnati  
513-629-9040

[www.cincinnati recycling and reuse hub.com](http://www.cincinnati recycling and reuse hub.com)

## Cylinders & Tanks

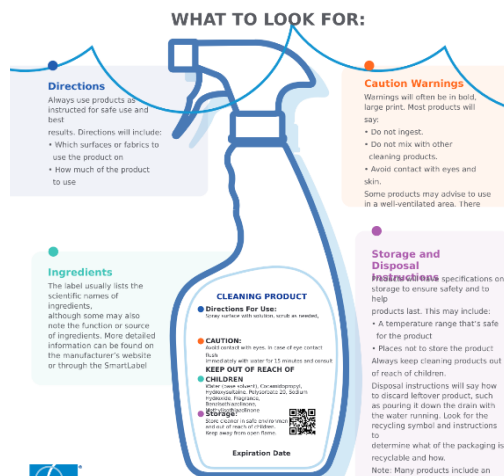
# Gasoline

4650 Spring Grove Avenue,  
Cincinnati  
1-800-722-2818

## Household Cleaners

KEEP OUT OF REACH OF CHILDREN  
**CAUTION:** HARMFUL IF  
SWALLOWED. SKIN AND EYE IRRITANT.  
**DO NOT** ingest. Avoid contact with skin, eyes, mucous  
membranes and clothing. Contains Chlorine Bleach and Sodium  
Silicate. **DO NOT** mix with any other products such as dishwashing  
liquids, cleaning products or ammonia as harmful fumes may be  
generated. Not for handwashing.

## How to Read a Cleaning Product Label



Source: American  
Cleaning Institute



american cleaning institute  
www.cleaninginstitute.org



## Latex & Oil Paint

Certain paint will last up to 20 years and can be donated to organizations. **Latex paint (including paint thinner) is not considered hazardous** and can be dried out to put in household trash. For large amounts, mix in paint hardener, cat litter, concrete mix, or something similar. **Oil paint contains toxic chemicals** and should be properly disposed of.

### Cleanlites Recycling

7806 Anthony Wayne Avenue, Cincinnati  
1-800-778-6645

### Matthew 25 Ministries

11060 Kenwood Road, Blue Ash  
513-793-6256

*Latex paint donations*

### Environmental Enterprises

4650 Spring Grove Avenue, Cincinnati  
1-800-722-2818

### Midwest Environmental Services

27 Kiesland Court, Hamilton  
513-681-9990

## Pesticides & Fertilizers

Pesticides should never go down the drain or in a landfill, as their residues can cause serious harm. If able, use them up before disposing. *The Kentucky Department of Agriculture hosts a free pesticide collection for farmers.*

### Kentucky Department of Agriculture

Office for Consumer & Environmental Protection  
Program  
502-573-0282  
[www.kyagr.com/consumer](http://www.kyagr.com/consumer)

### Environmental Enterprises

4650 Spring Grove Avenue, Cincinnati  
1-800-722-2818

## Prescription Drugs

Certain medications should never be flushed, as it can affect local soil and water. There are two ways to dispose of expired medication:

1. **Drug disposal pouches:** This specialized pouch de-activates medication and are available at the Northern Kentucky Health Department. Visit [www.nkyhealth.org](http://www.nkyhealth.org) for more information.
2. **Medication drop-boxes:** Most sheriff and police departments have medication drop-boxes for unneeded or expired medications. *They will not accept liquid medication, vitamins, supplements, needles, asthma inhalers, mercury thermometers, iodine-containing medication, or illegal drugs/substances (including marijuana).*
3. **DEA's National Prescription Take Back Day:** The Drug Enforcement Administration (DEA) offers Take Back Days throughout the year. Visit [www.dea.gov/takebackday](http://www.dea.gov/takebackday) for more information. *Vaping devices are accepted at this event, but lithium-ion batteries must be removed first.*



## Needles

Place used needles in either a Sharps container (provided by most pharmacies) or a rigid plastic #2 laundry detergent bottle, duct tape the lid shut, and dispose with household trash. **Sheriff and police departments will not accept needles.**



**Stericycle**  
Sharps Mailback Program  
1-855-703-1916  
[www.stericycle.com](http://www.stericycle.com)

## Additional Hazardous Waste

If you have something not already mentioned in this guide, reach out to your local SWC or contact the organizations below for assistance.

**Cleanlites Recycling**  
7806 Anthony Wayne Avenue,  
Cincinnati  
1-800-778-6645

**Environmental Enterprises**  
4650 Spring Grove Avenue,  
Cincinnati  
1-800-722-2818

**Midwest Environmental Enterprises**  
27 Kiesland Court, Hamilton  
513-681-9990



## Household Hazardous Waste Collection Event

The Northern Kentucky Household Hazardous Waste Action Coalition is dedicated to spreading awareness of the proper disposal and recycling of household hazardous waste.

The **Household Hazardous Waste (HHW) Collection Event** is typically the first Saturday of November each year, located at the Thomas More Stadium (Home of the Florence Y'alls) in Florence. The HHW Collection is FREE for Boone, Campbell, and Kenton County residents. There are certain limitations and guidelines. More information can be found at [www.nkyhhw.org](http://www.nkyhhw.org) or by contacting your local SWC.

**Accepted items:** aerosol cans, antifreeze, batteries (all types), corrosives/flammables, electronics, ink/toner cartridges, light bulbs, oil, paint (10 can limit), pesticides, tanks/cylinders, and TVs (limit of two).

**Prohibited items:** appliances, fertilizers, mercury-containing devices, medications, tires, or paper.



## CONSTRUCTION & YARD WASTE

Construction waste can include concrete, steel, wood, asphalt, and more. Yard waste includes dirt branches, and tree debris. See Landfills and Transfer Stations (located on Page 5) for additional disposal methods.

### Affordable Landscape Supplies

*Yard waste*

4346 Bullittsville Road, Burlington  
859-903-0022

### Cincinnati ReUse Center

*Reusable building materials*

1530 Tremont Street, Cincinnati  
513-921-0111

### H. Hafner & Sons

*Construction and yard waste*

5445 Wooster Road, Cincinnati  
513-321-1895

### Habitat for Humanity ReStore

*Gently-used building material*

15 Donermeyer Drive, Bellevue  
859-261-0456  
8309 US-42, Florence  
859-371-0038

### Newtown Fill Ltd.

*Construction waste*

7960 Main Street, Cincinnati  
513-271-8540

### Ohio Mulch

*Yard waste*

5519 North Bend Road, Burlington  
859-586-1173

## PAPER SHREDDING

### Boone County Recycling Center

*During certain events*

3275 Maplewood Drive, Burlington  
859-334-3151

### Office Depot

Various locations

### Document Destruction

4511 Reading Road, #1229,  
Cincinnati  
513-772-1114

### Staples

Various locations

### Shred-It

1-866-593-9280

[www.shredit.com](http://www.shredit.com)

## PACKAGING MATERIALS

Packing peanuts and other expanded polystyrene (EPS) are among the most common sources of litter and are often mistaken as viable food by birds and fish. EPS can take thousands of years before breaking down. Other plastic materials, like bubble wrap and air pillows, can take hundreds of years.

### Eco Development

*EPS only*

4219 US-42, Mason  
513-336-0777

### Cincinnati Recycling & Reuse Hub

911 Evans Street, Cincinnati  
513-629-9040

[www.cincinnati recycling and reuse hub.com](http://www.cincinnati recycling and reuse hub.com)

### Grocery Stores

*Plastic bags, bubble wrap, air pillows, etc.*  
Various locations

### FedEx

Various locations

### UPS

Various locations

## Plastic Bags



Certain convenient, grocery, and retail stores have a barrel in the front of the store to recycle single-use plastic bags. These stores utilize companies like Novolex, How2Recycle, and Beyond the Bag (Closed Loop). Some stores include Kroger, Meijer, Dick's Sporting Goods, Walgreens, Walmart, Target, and Kohl's. **Next time you are going to the store, be sure to check out the recycling options in the front!**

# DONATING UNWANTED ITEMS

There are many ways to get rid of unwanted items, some even paying you in the process. Unwanted items can include clothing and footwear, furniture, toys, household cleaners, and building material. By donating or selling your items, you are giving them a second life and diverting from landfills. Some ways include:

- Phone apps: Poshmark, ThredUP, Etsy, etc.
- Facebook Marketplace
- eBay
- Craig's List Cincinnati
- Yard sales
- Clothing donation bins
- Local secondhand stores and charity organizations

Secondhand stores and charity organizations are easy ways to get rid of items without the hassle of shipping.

**Before donating or selling items at the organizations below, please be aware that each location has different item guidelines, most-needed items wishlists, drives, operating hours, and drop-off times.**

More information can be found on their individual websites. Here are some local ones to the Tri-State:

## **Be Concerned**

*General household items*  
1100 Pike Street, Covington  
Erlanger United Ministries  
525 Graves Avenue, Erlanger  
859-727-0300  
[www.beconcerned.org](http://www.beconcerned.org)

## **Goodwill**

*General household items*  
Various locations  
[www.goodwill.org](http://www.goodwill.org)

## **Plato's Closet & Once Upon A Child**

*Gently-used clothing*  
7941 Mall Road, Florence  
859-282-9800  
[www.platosclosetflorence.com](http://www.platosclosetflorence.com)  
[www.onceuponachild.com/locations](http://www.onceuponachild.com/locations)

## **Brighton Center**

*General household items*  
Various locations  
[www.brightoncenter.com](http://www.brightoncenter.com)

## **Helping Hearts**

*General household items*  
7199 Turfway Road, Florence  
[www.helpingheartsnky.org](http://www.helpingheartsnky.org)

## **St. Vincent de Paul**

*General household items*  
Various locations  
[www.svdpnky.org](http://www.svdpnky.org)

## **Emergency Shelter of NKY**

*General household items*  
436 W 13<sup>th</sup> Street, Covington  
859-291-4555  
[www.emergencyshelternky.org](http://www.emergencyshelternky.org)

## **Northern Kentucky Community Action Commission**

*Collection drives*  
Various locations  
859-581-6607  
[www.nkyfamilypromise.org](http://www.nkyfamilypromise.org)

## **The Salvation Army**

*General household items*  
Various locations  
[www.satruck.org](http://www.satruck.org)

## **Fairhaven Rescue Mission**

*General household items*  
260 Pike Street, Covington  
859-491-1027  
[www.fairhavenmission.org](http://www.fairhavenmission.org)

## **Master Provisions**

*Gently-used clothing, bed sheets, towels*  
7725 Foundation Drive, Florence  
859-474-0467  
[www.masterprovisions.org](http://www.masterprovisions.org)

## **Vietnam Veterans of America**

*General household items*  
1-800-535-3834  
[www.vva.org](http://www.vva.org)

## **Family Promise NKY**

*General household items*  
336 W 9<sup>th</sup> Street, Newport  
859-360-0905  
[www.nkyfamilypromise.org](http://www.nkyfamilypromise.org)

## **Matthew 25 Ministries**

*General household items*  
11060 Kenwood Road, Cincinnati  
513-793-6256  
[www.m25m.org](http://www.m25m.org)

## **Welcome House**

*General household items*  
1132 Greenup Street, Covington  
859-431-8717  
[www.welcomehousenky.org](http://www.welcomehousenky.org)



# FOOD DONATIONS & FOOD WASTE

## Food Donations

Before donating items, please be aware that each location has different item wishlists, drives, operating hours, and drop-off times. More information can be found on their individual websites.

### Be Concerned

General household items  
1100 Pike Street, Covington  
Erlanger United Ministries  
525 Graves Avenue, Erlanger  
859-727-0300  
[www.beconcerned.org](http://www.beconcerned.org)

### Brighton Center

General household items  
Various locations  
[www.brightoncenter.com](http://www.brightoncenter.com)

### Northern Kentucky Community Action Commission

Various locations  
859-581-6607  
[www.nkyfamilypromise.org](http://www.nkyfamilypromise.org)

### Master Provisions

Gently-used clothing, bed sheets, towels  
7725 Foundation Drive, Florence  
859-474-0467  
[www.masterprovisions.org](http://www.masterprovisions.org)

### Matthew 25 Ministries

General household items  
11060 Kenwood Road, Cincinnati  
513-793-6256  
[www.m25m.org](http://www.m25m.org)

### St. Vincent de Paul

General household items  
Various locations  
[www.svdpnky.org](http://www.svdpnky.org)

### Welcome House

General household items  
1132 Greenup Street, Covington  
859-431-8717  
[www.welcomehousenky.org](http://www.welcomehousenky.org)

## Food Waste

Food waste that ends up in a landfill decomposes and releases carbon dioxide and methane. Methane is over 20x more potent than carbon dioxide and is considered to be a powerful greenhouse gas (GHG). To decrease this GHG, we can divert food waste and give it a new life: compost! Compost can easily be done in our own backyards and used for growing our own food or plants. Contact your local SWC for more information.

Residents in Campbell County are eligible to receive a free compost bin and educational information.

Contact the UK Campbell County Cooperative Extension Service (located on Page 4) for more information.



Source: MSW Plant

# LITTER CLEANUPS



Litter is an unhealthy, harmful, and intolerable blight. It not only affects our quality of life, but also creates a negative impression of our community. It pollutes our land and water, and is detrimental to wildlife. Litter is also expensive to remove – Kentucky spends millions of dollars each year cleaning up roadways. **Littering is ILLEGAL!**

NKSWMA hosts litter cleanups and abatement programs to combat litter year-round. If you would like to learn more about how to get involved and stop litter in your community, contact your local SWC. Your SWC can work with you to plan a community litter cleanup for your neighborhood or business. **Join us for our Community Cleanups, Trash for Cash Cleanups, River Sweeps, and more!**

## EDUCATION

Your SWC has a wealth of information to share with you! They are available to give presentations to schools, civic groups, churches, camps, and anyone else. Your SWC can discuss any subject related to solid waste, including recycling, composting, waste reduction, household hazardous waste, and litter. Please contact your local SWC if you are interested in any programs, wish to schedule a presentation, or need additional information.



**BOONE COUNTY**  
KENTUCKY

**Boone County**  
**Solid Waste Coordinator**

Jake Buerger  
Solid Waste Services Supervisor  
859-334-3629

[wbuerger@boonecountky.org](mailto:wbuerger@boonecountky.org)  
5645 Idlewild Road, Burlington

[www.boonecountky.org](http://www.boonecountky.org)



CAMPBELL  
COUNTY | KY

**Campbell County**  
**Solid Waste Coordinator**

Megan Clere  
Solid Waste Coordinator  
859-547-1866

[mclere@campbellcountky.gov](mailto:mclere@campbellcountky.gov)  
1098 Monmouth Street, Newport

[www.campbellcountky.gov](http://www.campbellcountky.gov)



**KENTON**  
COUNTY

**Kenton County**  
**Solid Waste Coordinator**

Melissa Grandstaff  
Solid Waste Management Coordinator  
859-392-1919

[melissa.grandstaff@kentoncounty.org](mailto:melissa.grandstaff@kentoncounty.org)  
420 Independence Station Road,  
Independence

[www.kentoncounty.org](http://www.kentoncounty.org)

*The NKSWMA and this Resource Guide do not seek to endorse or promote any company. The listings are provided as a service to inform the public of proper disposal and recycling options. Anyone with suggestions, additions, or corrections, please contact your local SWC.*