

2021



Now seeking applicants desiring to serve as
Training Battalion Chief





Who We Are

Mission:

Florence Fire/EMS provides quality services, ensuring the safest community through education, prevention, and mitigation.

Vision:

To be the industry leader and model of service in the region by embracing change, overcoming challenges, and respecting tradition.

Our History

The Florence Volunteer Fire Department came into existence in 1936 being organized, as most volunteer fire departments, by the citizenry of Florence with no city affiliation. The first engine was housed in the garage of a gas station in the then center of town on Main Street.

In 1970 a paid fire chief was hired and in 1979 six career firefighters were hired to supplement the then all-volunteer force. In 1972 Florence Rescue, later named Florence Emergency Medical Services, was organized. As with the fire department, this organization was staffed predominantly by volunteers.

At the same time the fire protection district was organized for a portion of the unincorporated area to the south and west of the City of Florence. Since its inception, the Florence Fire Protection District contracts with the department and City of Florence for fire and EMS protection.

Both fire and EMS organizations thrived throughout the 1980's. Membership and volunteer interest remained very high and both departments became leaders within the Northern Kentucky emergency services community. Throughout the 1970's, 1980's, and 1990's the city continued to experience exponential growth in size and population.

Around 1989, Florence Volunteer Fire Department, Inc. opted to disband the corporation and become a department under the city of Florence. Until 1994 Florence Fire Department and Florence Rescue operated as separate and independent organizations. It was in 1994 that these organizations were brought together as a single department under the City of Florence and known as, Florence Fire/EMS.

In 1998, six contract paramedics were brought into service from an independent provider of Advanced Life Support (ALS). These contracted paramedics essentially added six personnel to department staffing however, these individuals did not provide any firefighting, rescue or other fire related capabilities as they strictly staffed the ambulances. The City hired its own paramedics and stopped the practice of contracting paramedic service in 2005.

In 1999, 12 paid staff members were added to the department bringing the number of career staff to 38 plus the six contract paramedics for a total of 44. At that point in time, volunteer membership had dropped to less than 20 total members. In 2020 the Florence Fire/EMS moved to a strictly career department. Then in 2021 the city approved additional career staff to bring the total number 72.



Our Training Program

In addition to IFSAC Essentials, along with EMS continued education, crews have developed specialty skillsets including Technical/Rope Rescue, Auto Extrication, and Truck Company Operations

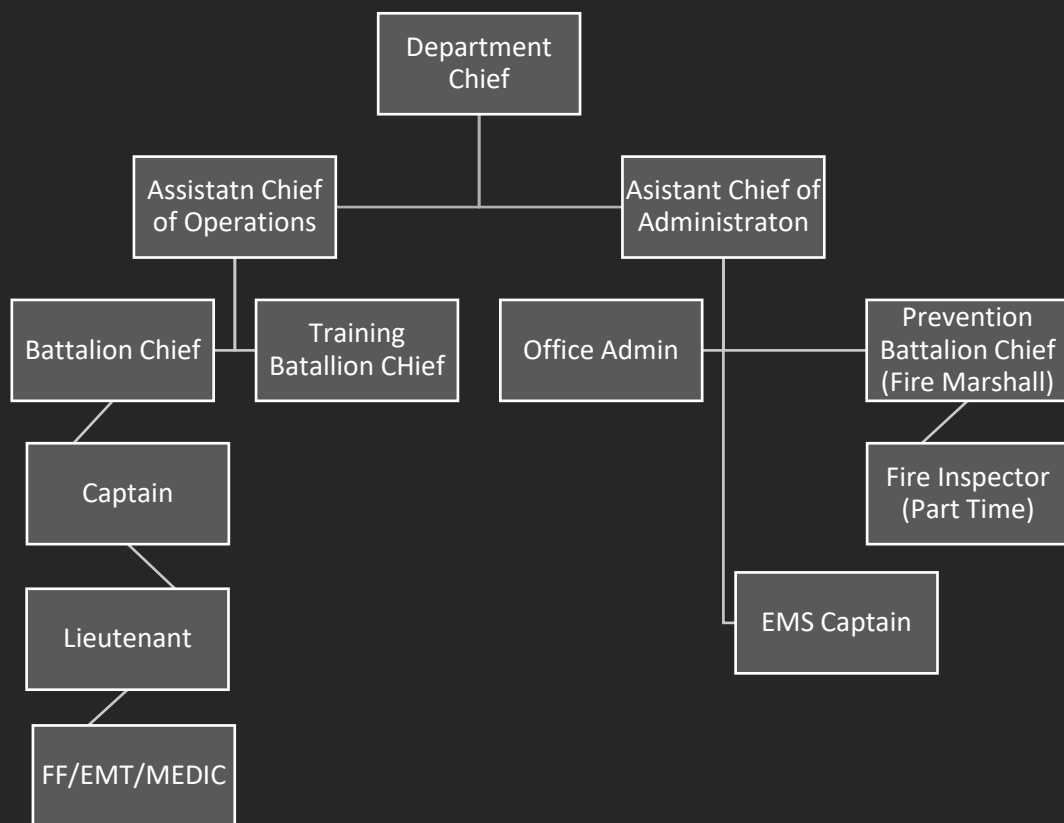




Florence Fire/EMS Training Facility

- 4 Story Training Tower
- Standpipe capabilities
- Multiple Burn Rooms
- Anchors for High Angle Rope Rescue
- 100 + person classroom
- Utility room with on-site SCBA Compressor / Fill Station

Department Profile



Florence Fire/EMS currently employs 72 paid staff members. This includes fire suppression shift personnel and 6 administrative personnel. The department is rated Class 2/3 by the Insurance Service Office (ISO), covers approximately 21 square miles and operates out of three fire stations to provide fire and EMS services to nearly 50,000 residents of the City of Florence and surrounding Florence Fire Protection District. The call volume for 2020 was 9,475 combined fire and EMS calls.

Candidate Profile

EDUCATION/EXPERIENCE

- A high school diploma or equivalent is required; Associate degree in Fire Science or related field preferred.
- Preferred candidates will have experience as a training officer for fire service personnel.
- Preferred candidates will have command experience in an established fire department.

CERTIFICATES AND LICENSES

- A valid State Driver's License is required.
- National Registry of EMT or Kentucky EMT certification is required.
- IFSAC/ProBoard Fire Instructor I certification is required.
- IFSAC/ProBoard Fire Instructor II preferred or required within 1 year.
- KY EMS Instructor preferred or required within 1 year.
- CPR Instructor preferred or required within 1 year.
- Must be IFSAC/ProBoard FFI & II or equivalent from another state.
- Must meet Kentucky 1403 requirements within 1 year.

SKILL AND ABILITIES IN:

- Effectively handling difficult or sensitive issues, using professionalism and an understanding of organizational culture.
- Interacting with others using tact, patience and courtesy.
- Using interpersonal and problem-solving skills, including anticipating, analyzing, diagnosing and resolving problems.
- Using initiative and independent judgment within established guidelines.

Candidate Profile

- Delivering effective instructor-led training, both formal and informal, to various audiences and ability to effectively present information to moderate sized groups.
- Must possess general knowledge of state and federal guidelines in the area of personnel management.
- Must possess broad knowledge of the principles, practices and procedures relating to contemporary firefighting, rescue, emergency medical care and hazardous materials mitigation.
- Must possess broad knowledge of the operation, maintenance, and applied tactics of fire apparatus, ambulances and equipment.
- Must possess ability to quickly analyze situations and rapidly adopt a safe, effective, and reasonable courses of action with regard to surrounding hazards and circumstances.
- Must possess ability to deal equitably and firmly with peers, subordinates, and the general public.
- Must possess ability to maintain composure in emotionally charged and stressful situations.
- Must have broad knowledge of contemporary office practices, procedures and equipment.
- Must be skilled in business math, grammar, spelling and punctuation.
- Must be skilled in using modern computing systems and public safety-related programs.
- Able to respond to emergencies; can meet and maintain the minimum requirements established by the State of Kentucky and the City of Florence.

Benefits/ Compensation

- Salary of \$92,000.00 - \$97,000.00
- Additional \$4,000 State Incentive Pay
- Health & Dental Insurance Coverage
 - Care Here Clinic access
 - Paid Holidays
- Paid Annual Personal Leave



Full detail of City of Florence Benefits can be found by scanning the QR code above then scrolling to “View Our Benefits Program” or at:

<https://florence-ky.gov/wp-content/uploads/2021/02/Benefits-Guide-FY2021.pdf>

LET'S DO THIS!



Information and applications can be found/submitted by scanning the above QR Code or at:

<https://florence-ky.gov/residents/recruitment/>

If you have questions, call during business hours M-F

(859)647-5660

Florence Fire/EMS Headquarters

1152 Weaver Rd

Florence, KY 41042



THANK YOU!